

HI12-TKHB

Die-Cast Hi-Security Cable Management Housing & Bracket



USER MANUAL

FEATURES

- 12 Super Hi-Power Refractor IR LED
- IR Distance up to 395ft / 120m ▲
- IP68 Rating
- User Adjustable IR LED Intensity (**VR**), Factory Default 80% ◆
- Fully-Cable Managed Bracket
- Uses professional rust-proof stainless steel screws
- Heater & Blower\
- Power Ready Plug for 12V DC Camera
- 24V AC, 60VA (Power Supply not included)

◆▲ Please see page 6 and 8

* **UL certification only refers to the power converter and the power module**



Please read the Manual before attempting to use this product.

Specifications and appearance are subject to change without notice.



CAUTION

RISK OF ELECTRIC SHOCK
DO NOT OPEN!



TO REDUCE THE RISK OF ELECTRICAL SHOCK,
DO NOT OPEN COVERS (OR BACK).
NO USER SERVICEABLE PARTS INSIDE.
REFER SERVICING TO QUALIFIED
SERVICE PERSONNEL.



Disposal of Old Electrical & Electronic Equipment (Applicable in the European Union and other European countries with separate collection systems).

This symbol on the product or on its packaging indicates that this product shall not be treated as household waste. Instead it shall be handed over to the applicable collection point for the recycling of electrical and electronic equipment. By ensuring this product is disposed of correctly, you will help prevent potential negative consequences for the environment and human health, which could otherwise be caused by inappropriate waste handling of this product. The recycling of materials will help to conserve natural resources. For more detailed information about recycling of this product, please contact your local city office, your household waste disposal service or the shop where you purchased the product.

CAUTION

1. Read and follow instructions

All operating and user instructions should be read and followed before the unit is to be operated.

2. Secure all screws

Please make sure all rust-proof stainless steel screws are installed securely to ensure a waterproof seal.

3. Electrical connections

Only a qualified electrician should be allowed to make electrical connections.

4. Do not disassemble the product

Do not disassemble the product as it is dangerous and may cause damage to the product. Refer all servicing to qualified service personnel.

5. Handle the product with care

Be careful when handling the product. Do not drop it or subject it to strong shock or vibrations in order to prevent any damage to the product. Do not handle the product in a wet environment or when your hands are wet.

6. Reducing risk

To reduce risk of fire or electric shock, do not remove cover. Do not open product in wet weather. No user serviceable parts inside. Refer servicing to qualified service personnel.

7. Unpacking

Unpack carefully. Electronic components can be damaged if improperly handled or dropped. If an item appears to have been damaged during shipment, please place it properly in its carton and notify the shipper.

8. Installation notice

Tropical, coastal salt water environment:

If you plan to install this product into a tropical, sea, coastal salt water or corrosive industrial water/mist environment, please seal each stainless screw and fitting with a silicon grease compound. This will help prevent electrolysis corrosion occurring and extend the lifespan of the product and housing and prevent premature deterioration.

9. Voltage

If you are using a camera which requires a 24V AC power input, please run a separate power line to the camera.

LIMITED WARRANTY

OKINA USA Products are covered under warranty for one (1) year from the date of purchase. The warranty will automatically be voided if any of the following occurs:

1. Product sticker is removed

If the product sticker is removed, we will not be able to confirm any information regarding when and where the product was purchased. We have no other way to verify the purchase record without the serial number on the product sticker; therefore, it should not be removed.

2. Product is modified in any way

If the product is scratched, damaged, or modified in a manner not described in this manual, the warranty will be voided immediately. It is the customer's responsibility to keep the product in good condition.

3. Power cable is cut

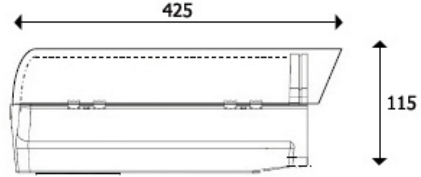
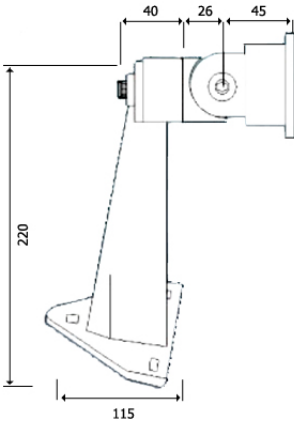
The power cable and any other cable should not be tampered with. Cutting or modifying of the cables will result in termination of the warranty

PACKAGE CONTENTS

- One (1) HI12-TKHB IR Illuminator with Professional Camera Housing
- One (1) Fully-Cable Managed Bracket
- One (1) Main Accessories Pack
 - Three (3) Rust-proof Stainless Steel Wall Screws
 - Three (3) Rust-proof Stainless Steel Mounting Screws
 - Three (3) Stainless Steel Washers
 - Three (3) Plastic Washers
 - One (1) Allen Wrench
- One (1) Secondary Accessories Pack
 - Three (3) Screw-on Connectors
 - One (1) Rubber Pad
 - One (1) Rust-proof Stainless Steel Camera Screw
 - One (1) Plastic Washer
- One (1) Operational Manual

* For any returns, please include all components listed above with original packaging in **Resalable Condition**. **Absolutely No Returns** will be accepted if any component is missing/damaged or if any cable is cut or tampered with.

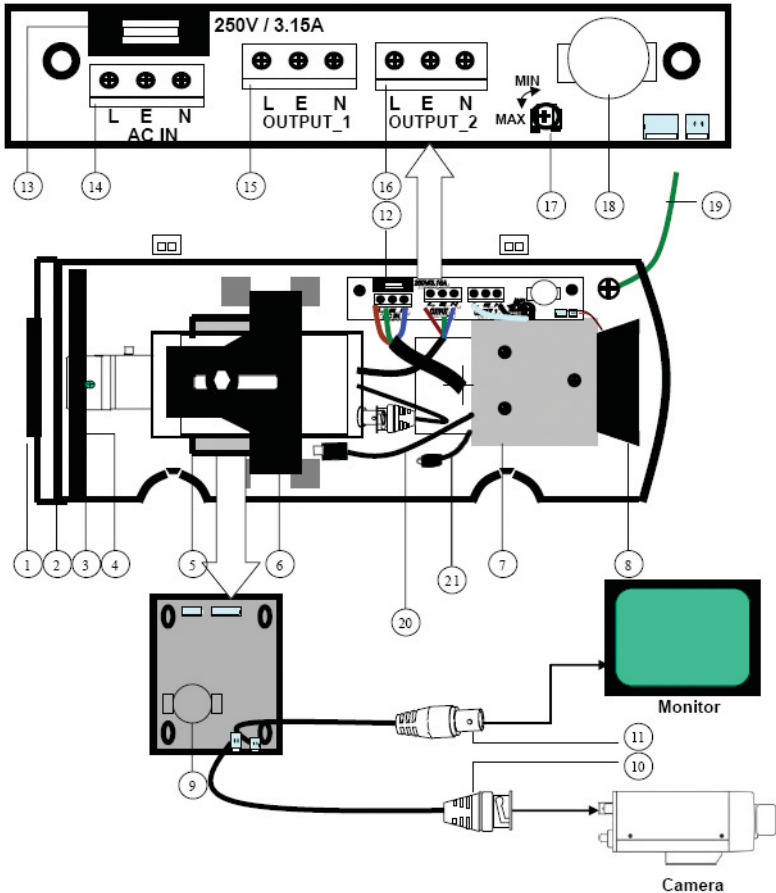
DIMENSIONS



Fully-Cable Managed Bracket:

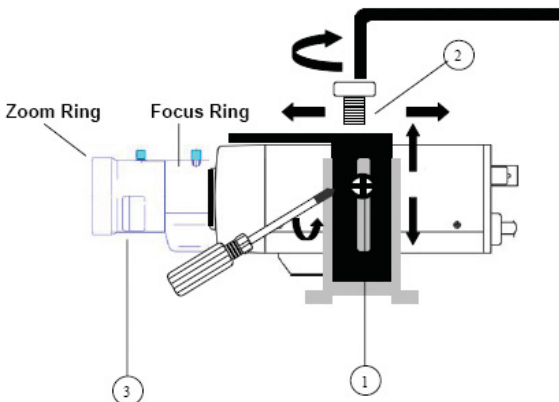
- Max Load: 3500g
- Material: Die-cast aluminum alloy with light ivory powder coated and stove finish
- Scan Angle: 180°
- Tilt Angle: 90°
- Net Weight: 900g
- Fixing: 3 Screws with bushings

PARTS & FUNCTIONS



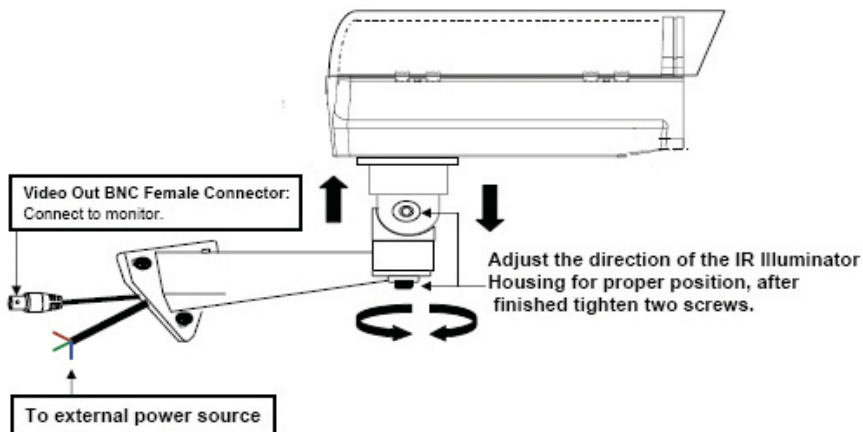
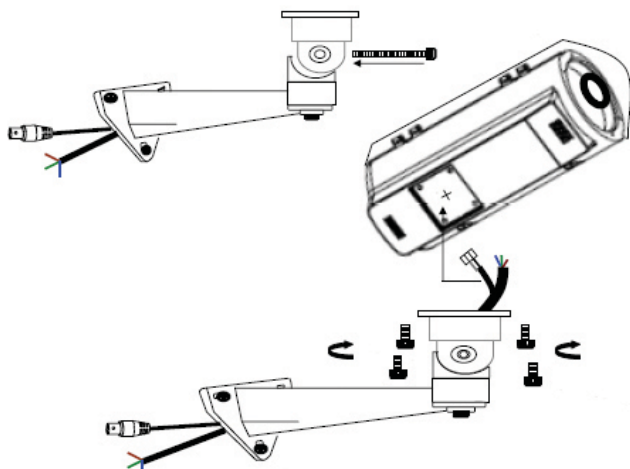
1. **Lens Cap with Heater**
2. **Temper Glass**
3. **IR LED:** 12pcs Super Hi-Power IR LED with Refractor
4. **IR Board and IR Board Bracket**
5. **Universal IR Control Circuit Board:** When the IR light turns on, it automatically adjusts the color to monochromatic through the universal IR control circuit.
6. **Camera Bracket**
7. **Power Supply Unit:** 24V AC input, 60VA
8. **Blower and Blower Bracket**
9. **Thermostat Switch**
10. **Video Input BNC Male Connector:** Connect to camera
11. **Video Out BNC Female Connector:** Connect to monitor
12. **Terminal Board**
13. **Fuse Holder:** With 250V / 3.15A fuse
14. **AC IN Terminal block:** 24V AC external power input
15. **OUTPUT_1 Terminal block:** Plug and fix the power cable of camera
16. **OUTPUT_2 Terminal block:** To power supply unit
17. **VR:** Adjust VR to set Infrared LED activation level
Factory default 80% -- If there is not enough IR light, adjust the level to maximum 100% ♦
18. **Thermostat Switch:** Turns on at 95°F / 35°C and turns off at 77°F / 25°C for Blower
19. **Ground wire:** To top cover
20. **12V DC Power-in jack:** To camera / center+, outer-
When using a camera which requires a 24V AC power input, please run a separate power line to the camera
21. **Flying Bare Lead Wire:** When the wire is not in use, cover it with the screw-on connector or tape the tip with tape to prevent damages caused by the bare lead wire.

INSTALLATION

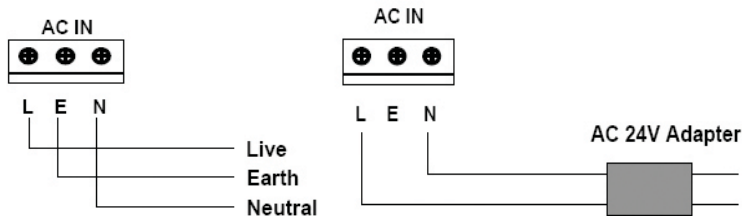


1. Loosen two screws on both sides of the camera bracket first.
2. Use the provided screw to fix the camera (not included) on the camera bracket.
3. Adjust zoom, focus and iris of the lens on the camera.
4. Adjust the direction of the camera for proper position, after finished tighten all screws.

How to install cables through the mounting bracket:



EXTERNAL POWER INPUT CONNECTION



NOTE: When using two-cord power cable, please connect them to "Live" and "Neutral."

SPECIFICATIONS

Model	HI12-TKHB
LED Quantity	12 Super Hi-Power Refractor IR LEDs
IR LED Beam Angle	30° and 45°
IR Wave Length	850nm
IR Distance	395ft / 120m ▲
IR Light On/Off	Auto Light Sensor Control
IR Power Consumption	16 Watts
Required Power Supply / Transformer *	24V AC (+/-10%), 60VA
Rating Current of PSU	3.5A
Heater Control	32°F / 0°C (on) ; 50°F / 10°C (off)
Defogging Device	65°F / 18°C (on) ; 83°F / 28°C (off)
Blower Device	95°F / 35°C (on) ; 77°F / 25°C (off)
Operating Temperature	-49°F ~ 122°F / -45°C ~ +50°C
IP Rating	IP68
Temper Glass Thickness	4mm
Mounting Bracket	Full-Cable Management
Construction	Die-Cast Aluminum Alloy
Coating	Ivory Powder Stove
Dimension	16.73(L) x 6.30(W) x 6.50(H) inches 425(L) x 160(W) x 165(H) mm
Camera Space	7.87(L) x 4.33(W) x 4.53(H) inches 200(L) x 110(W) x 115(H) mm
Net Weight (with bracket)	11.53 lbs / 5230g

* Power supply / transformer not included

▲ **NOTE:** IR light distances are entirely dependent upon environmental site conditions and the location at which the unit is situated. The type of camera being used is also very important.

Why PRO Series?

- Constructed from Heavy Duty Die-Cast Aluminum Alloy
- User adjustable IR LED intensity (VR)
- Uses professional rust-proof Stainless Steel Screws
- Fully-cable managed mounting bracket (except for IR7-TIR)
- IP66 rating or above on most products

Die-Cast Hi-Security Cable Management Housing & Bracket

HI12-TKHB

- 11 Super Hi-Power Refractor IR LED
- IR Distance up to 395ft / 120m
- IP68 Rating
- Heater & Blower
- 24V AC, 60VA



Housing & Bracket Front Opening

HUB-TF HUB-TFHB

- IP67 Rating
- Includes Heater & Blower for HUB-TFHB
- 24V AC, 40VA



Housing & Bracket Side Opening

HUB-TS HUB-TSHB

- IP68 Rating
- Includes Heater & Blower for HUB-TSHB
- 24V AC, 40VA



IR LED Illuminator

Possible Applications:

IR7-TIR

- 7 Super Power IR LED
- IR Distance up to 150~200ft / 45~70m
- Includes 1 Side & 1 Underneath Mounting Plate
- 24V AC, 40VA



Ceiling Mount Adaptor

HUA-TCE



Corner Mount Adaptor

HUA-TCO



Pole Mount Adaptor

HUA-TPO

