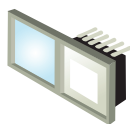


SIRZ36-754LP kit
SZ36-7540 + HI12-TKHBL**HI12-TKHBL****SZ36-7540**TRUE
DN**Mechanical IR Cut Filter (ICR)****Camera – SZ36-7540**

- 1/4" Sony Exview HAD CCD, Sony HQ-1 DSP
- 36x Optical Auto Focus / Auto Iris Zoom Lens
- Color: 540 TVL; B&W: 560 TVL
- 0.7 Lux @ F1.6 (30 IRE)
- Multi-language OSD Setting Menu
- Mechanical IR Cut Filter (ICR) / Infrared Compensation
- Auto / Ext / Schedule Day & Night Mode
- Privacy Zone Masking / Alarm Function
- Timer Clock; RS485 Interface (Pelco-D, Pelco P)
- 12V DC, 4.5W

Housing & Bracket – HI12-TKHBL

- 12 Super Power IR LED, 6pcs x 25° / 5pcs x 45°
- IR Distance up to 395ft / 120m ▲
- User Adjustable IR LED Intensity (VR)
Factory Default 80% ◆
- Fully-Cable Managed Bracket
- Uses professional rust-proof stainless steel screws
- IP66 Rating, Heater & Blower, I/O
- 24V AC, 60VA (Power Ready Plug for 12V DC Camera)

PAL Version also available



TRUE
DN

SPECIFICATIONS

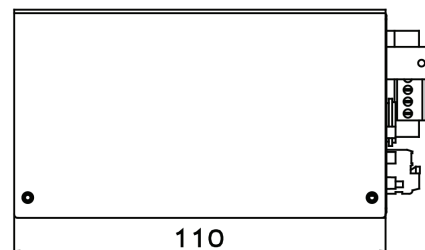
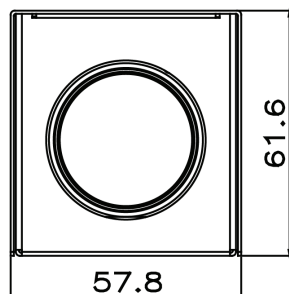
FC CE RoHS Made in Taiwan

Camera - SZ36-7540 Camera Catalog

Model	SZ36-7540
Image Sensor	1/4" Sony Exview HAD CCD
Total Pixels	NTSC: 410,000 Pixels ; PAL: 470,000 Pixels
Resolution	Color: 540 TVL, B&W: 560 TVL
DSP	Sony HQ-1
Minimum Illumination	Color: 0.7 Lux @ F1.6 (30 IRE), B&W: 0.1 Lux @ F1.6 (30 IRE)
Video Output	1.0Vp-p Composite, 75Ω; Y/C
Signal to Noise Ratio	More than 50dB
Mechanical IR Cut Filter (ICR)	IR cut filter removable, Lux level adjustable, 12 steps
Day & Night Mode	Color / B&W / Auto / External / Schedule
Synchronization System	INTERNAL / EXTERNAL (V-Lock)
Automatic Electronic Shutter	1/60 Sec., 1/100 Sec., 1/150 Sec., 1/200 Sec., 1/250 Sec., 1/300 Sec., 1/350 Sec., 1/400 Sec., 1/450 Sec., 1/500 Sec., 1/600 Sec., 1/700 Sec., 1/800 Sec., 1/900 Sec., 1/1000 Sec., 1/1300 Sec., 1/1700 Sec., 1/2000 Sec., 1/2500 Sec., 1/3200 Sec., 1/4000 Sec., 21Steps
White Balance	ATW / Auto / One Push / Manual / 3200K / 6300K
Back Light Compensation	ON / OFF
Flickerless	ON / OFF
Auto Gain Control	Auto / Manual (-3 to 28dB, 16x2dB steps)
Language	English, Traditional Chinese, Simplified Chinese, Japanese
Picture Effects	Negative / Mirror / B&W
Privacy Zone Masking	ON / OFF (8 Zones)
Camera Control Interface	PELCO P / PELCO D
Alarm Function	Alarm In, Alarm Out
Timer Clock	YY/MM/DD
Focusing System	Real time AF/ One push AF/ Manual / Infrared Compensation
Min. Working Distance	35mm (Wide end) to 1,500mm (Tele end)
Angle of View	H : 57.8o (Wide) ~1.7 o (Tele) / V: 43.7o (Wide) ~1.3 o (Tele)
Lens	36x optical zoom f3.4mm(Wide)~122.4mm(Tele), F1.6 to F4.5
Power Input ; Consumption	12V DC +10% ; 4.5W (Motor Inactive), 5.8W (Motor Active)
Operating Temperature ; Humidity	14°F~122°F / -10°C~+50°C ; 80% RH Max.
Storage Temperature ; Humidity	-4°F~140°F / -20°C~+60°C ; 20%~90% RH
Dimensions	2.28"(W) x 2.42"(H) x 4.33"(L) / 57.8(W)×61.6(H)×110(L) mm
Net Weight	0.51 lbs / 230g

*Specifications and appearance are subject to change without notice

DIMENSIONS AND PARTS





SPECIFICATIONS

FC CE RoHS Made in Taiwan

Camera - Please refer to SZ36-7540 Camera Catalog

Housing - HI12-TKHBL

Model	HI12-TKHB
LED Quantity	12 Super Hi-Power Refractor IR LEDs
IR LED Beam Angle	30° and 45°
IR Wave Length	850nm
IR Distance	395ft / 120m ▲
IR Light On/Off	Auto Light Sensor Control
IR Power Consumption	16 Watts
Required Power Supply / Transformer*	24V AC (+/-10%), 60VA
Rating Current of PSU	3.5A
Heater Control	32°F / 0°C (on) ; 50°F / 10°C (off)
Defogging Device	65°F / 18°C (on) ; 83°F / 28°C (off)
Blower Control	95°F / 35°C (on) ; 77°F / 25°C (off)
IP Rating	IP66
Temper Glass Thickness	4mm
Mounting Bracket	Full-Cable Management
Construction	Die-Cast Aluminum Alloy
Coating	Ivory Powder Stove
Dimension	16.73"(L) x 6.30"(W) x 6.50"(H) 425mm(L) x 160mm(W) x 165mm(H)
Camera Space	7.87"(L) x 4.33"(W) x 4.53"(H) 200mm(L) x 110mm(W) x 115mm(H)
Net Weight	11.53 lbs / 5230g

*Specifications and appearance are subject to change without notice

*Power Supply / transformer not included

▲ NOTE 1: IR light distances are entirely dependant upon environmental site conditions and the location at which the unit is situated. The type of camera being used is also very important.

◆ NOTE 2: Factory default for the IR LED activation level is 80%. If there is not enough IR light, adjust the VR level to maximum 100%.

DIMENSIONS AND PARTS

